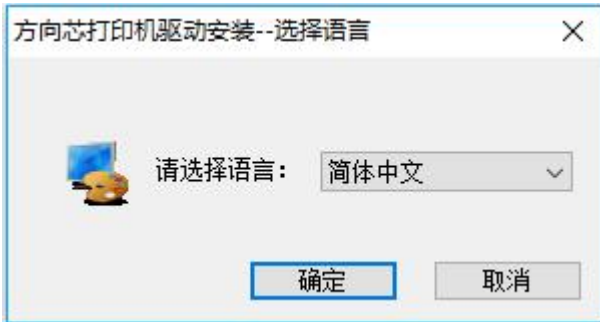


58(2inch)Driver Installation

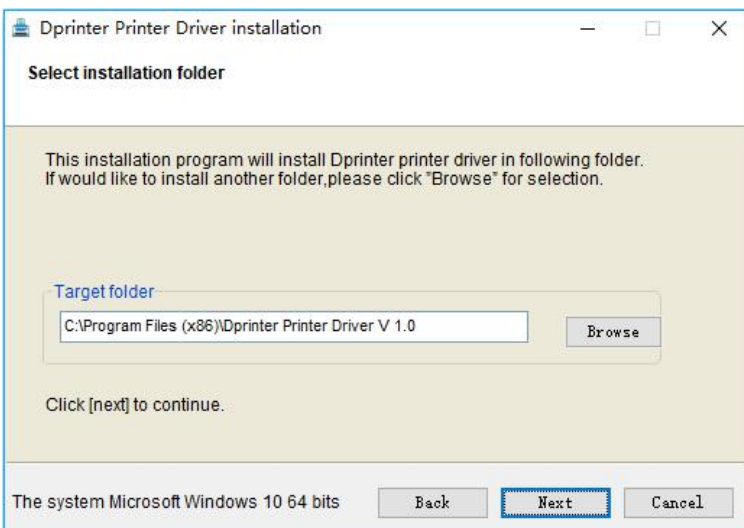
1, Open "Dprinter Drive Setup V1.0", select language. Confirm to next step



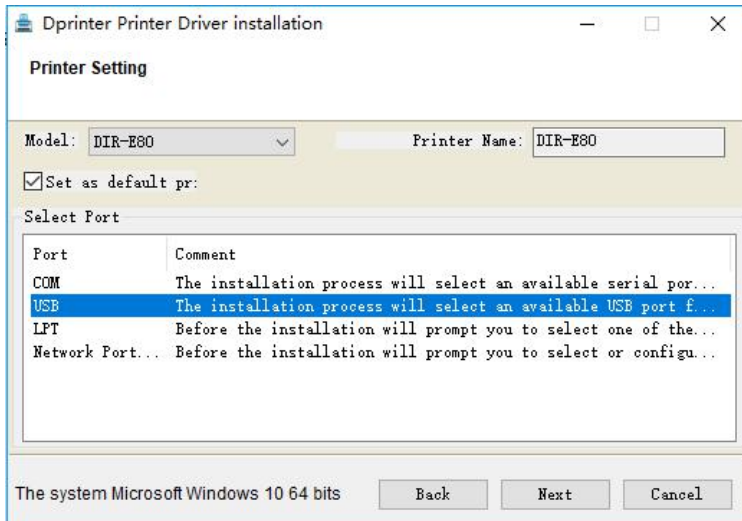
2, Drive Program will auto recognize current operating system.



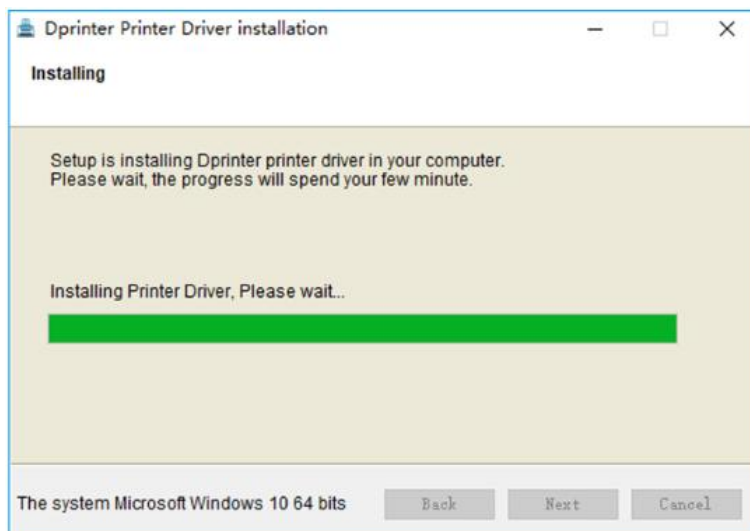
3, Select installation folder.



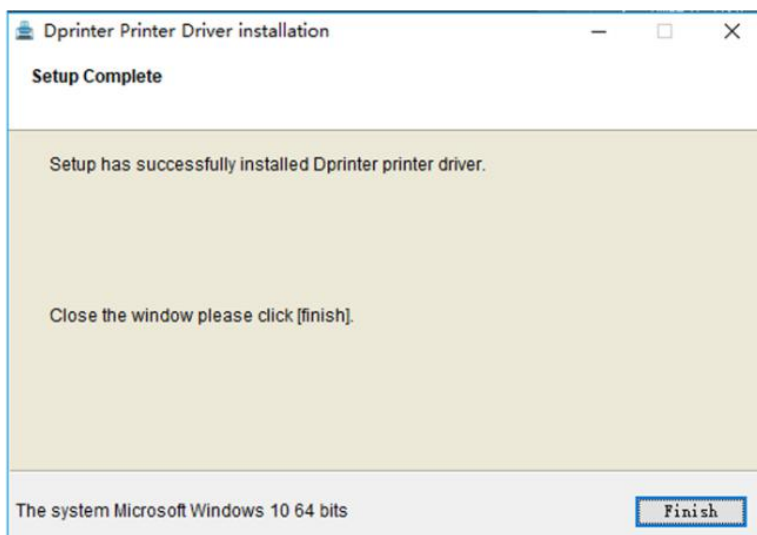
4, Select the printer model you use (check the model ID on the label on device), “next” to continue.



5, Installing...

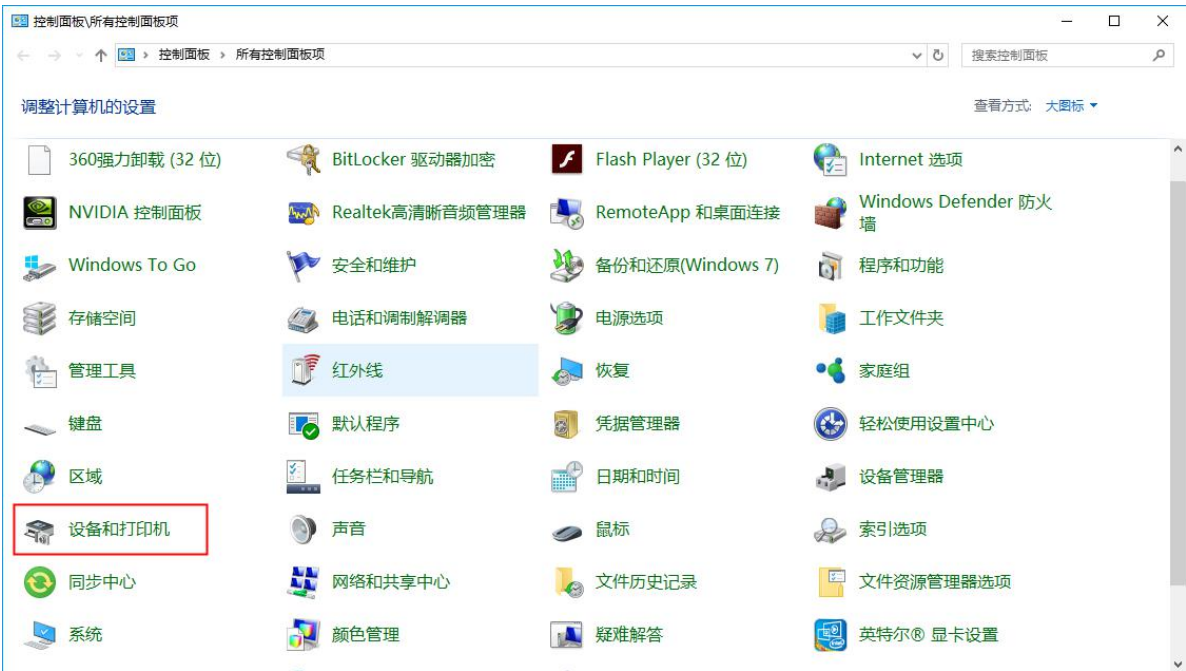


6, Drive installation completed!! Will be generated USB port automatically, you could use directly!



Driver Test To Print

- 1,Find printer driver on Control Panel, Click to enter “Device and Printer”.
- (打开“控制面板”，找到“设备和打印机”点击进入)



- 2, Find out the model you use and installed!
- (进来页面后，找到你所安装的型号)

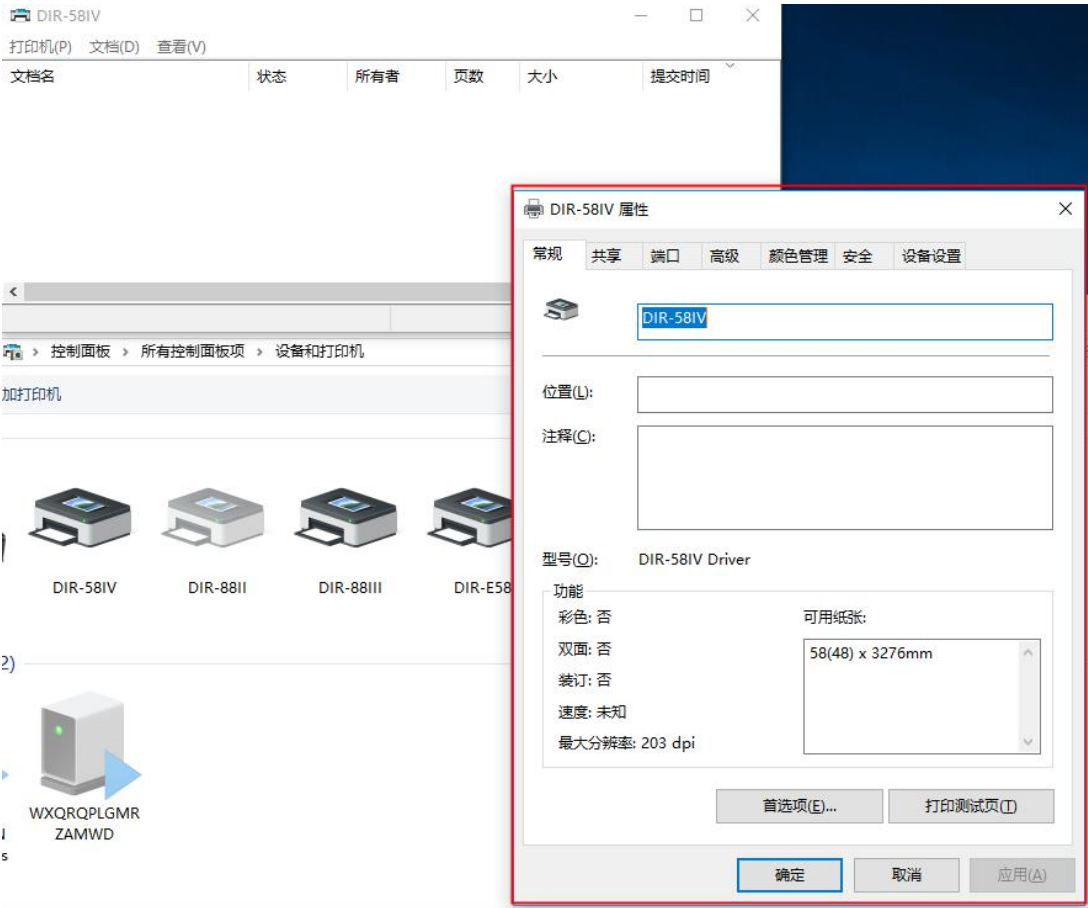


3)

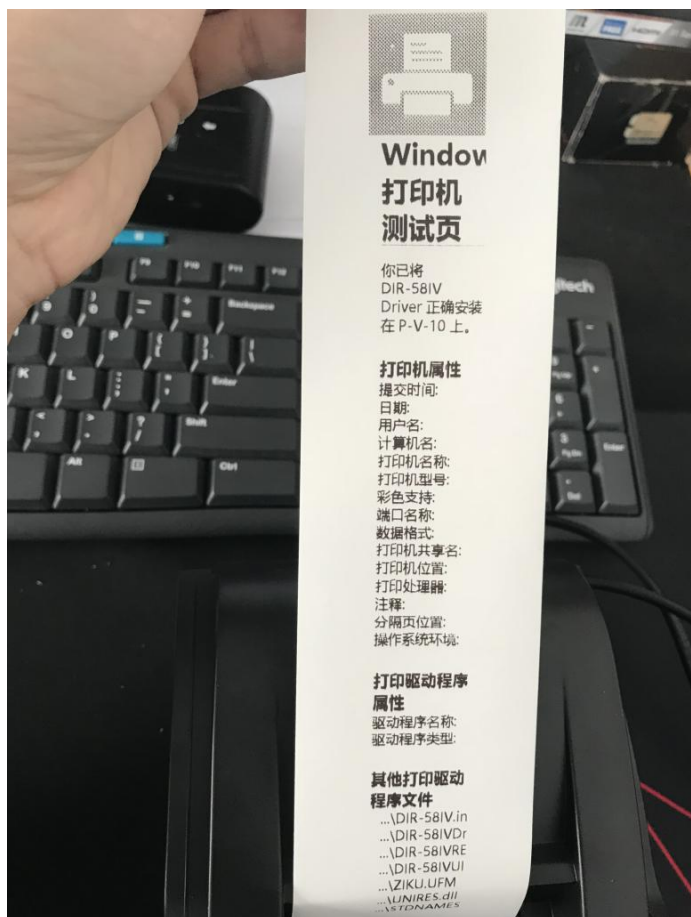
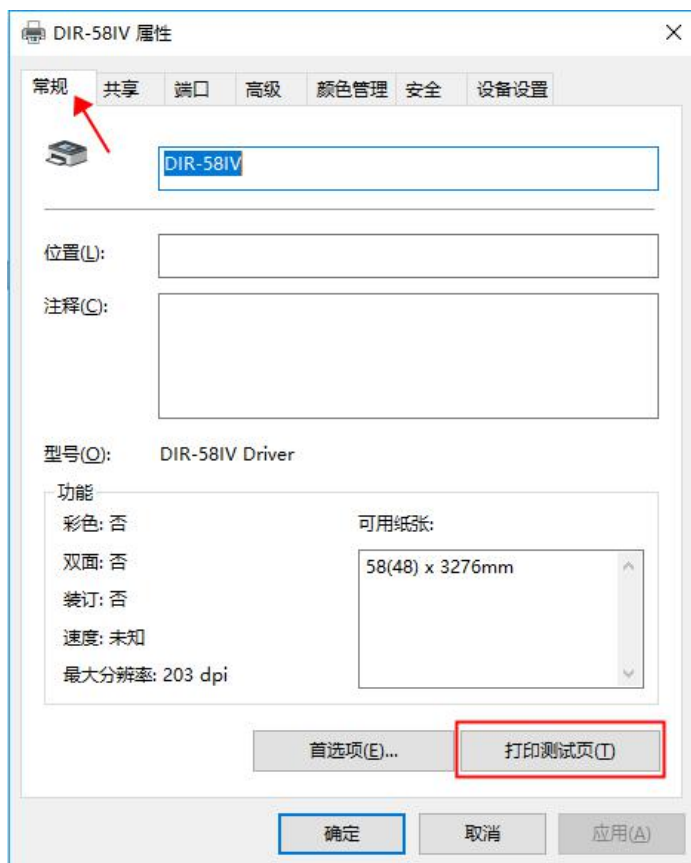
- 3, Double-click the driver to jump out of “Printing Status Window”
(找到对应型号的驱动，双击跳出“打印状态窗口”)



- 4, Right-Click “Printing Status Window” into “Property Option”
(右击“打印状态窗口”进入“属性”选择项)



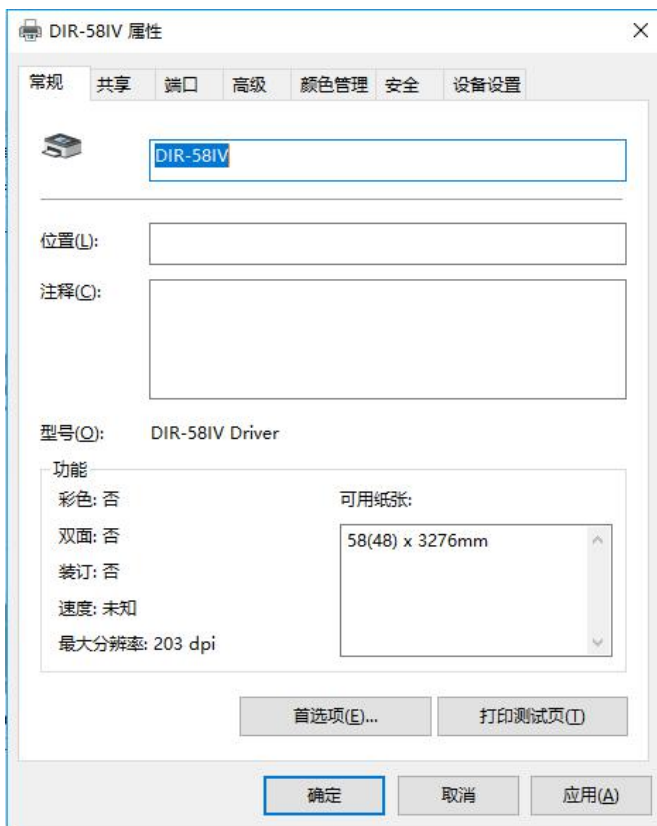
- 5, Select "Conventional" find the "Printing Test Page" and click, Driver test-page will be printed out if installation correctly (选择“常规”找到右下角“打印测试页”按钮，打印机会自动打印出驱动测试页)



If Test Page Printing Failed!!

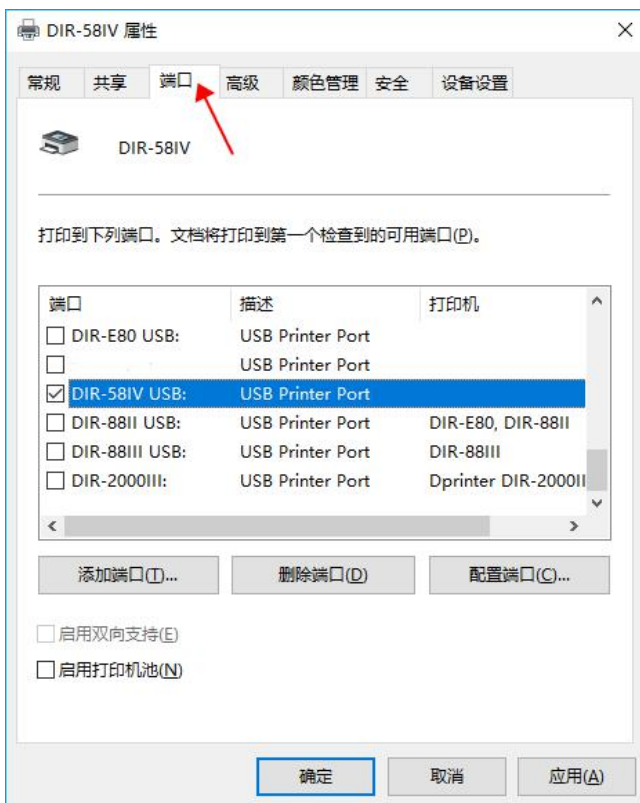
1, Right-Click “Printing Status Window” into “Property Option” again

(再次调出“属性栏”)



2, Into “Interface” option

(选择“端口”项)



- 3, Select other "ports" and click "Apply" until Test Page is printed out!
(选择其他“端口”并点击“应用”，直到能打印出测试页为止！)

